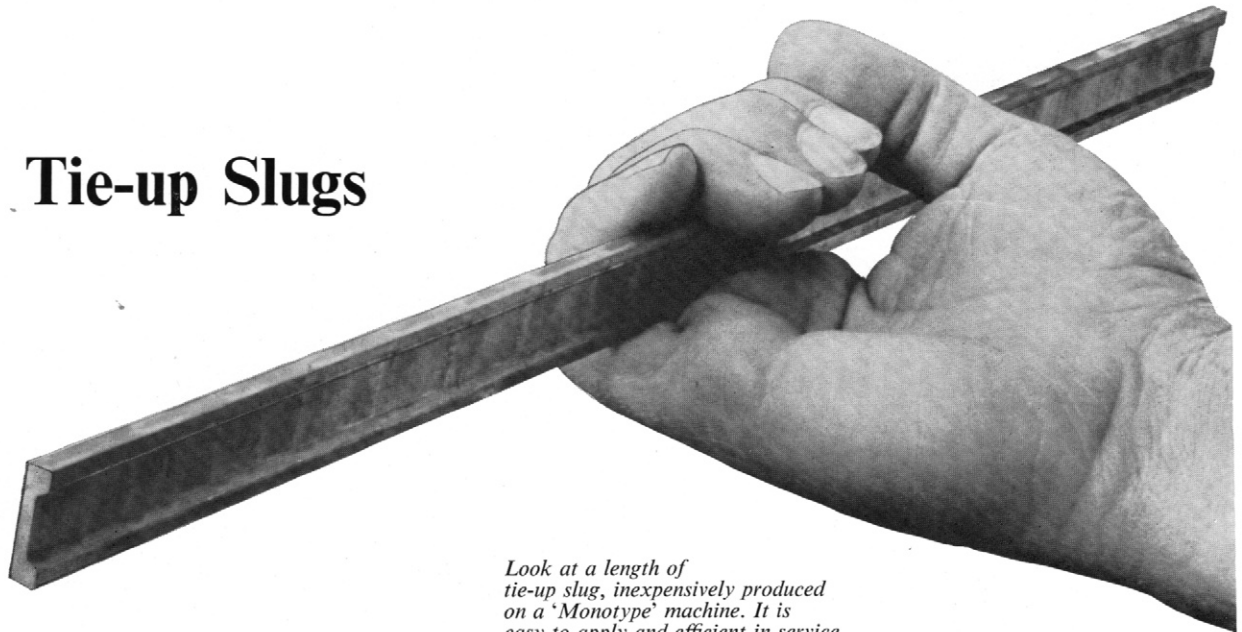


## Tie-up Slugs



*Look at a length of tie-up slug, inexpensively produced on a 'Monotype' machine. It is easy to apply and efficient in service.*

Many ingenious methods have been devised to simplify the securing of composed type before it is placed in the forme, and to avoid the need for subsequent removal of the tie. Nevertheless, a large number of printers find that the traditional inexpensive cord still has much to recommend it, particularly where means are available for retaining the cord in position during printing, if the type is subsequently to be kept standing.

The procedure is best served by the employment of tie-up slugs of special design. Easily and cheaply produced by a 'Monotype' Type and Rule Caster, by a 'Monotype' Composition Caster with Lead and Rule Attachment, or by a 'Monotype' Super Caster, they employ no moving parts.

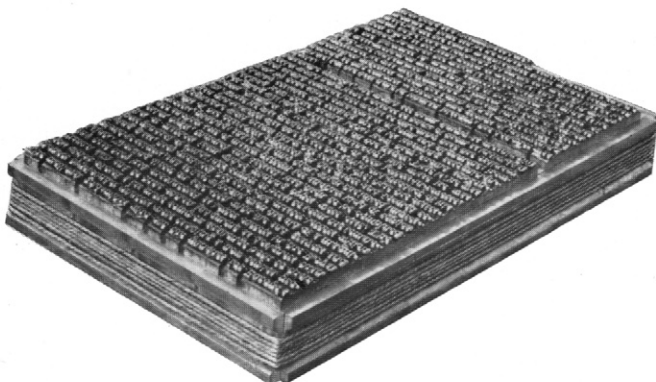
This type of slug is cast in continuous lengths (from a lead and rule mould) to full 12-pt. at top and bottom, but deeply waisted on one side.

Cut to the sizes required and placed round the type page, they provide an unbroken external recess in which the cord lies without projecting beyond the 12-pt. metal. It can, therefore, remain undisturbed during lock-up, doing away with the need for untying and retying if the type has to be stored.

The consequent saving of skilled time adds up to a very appreciable total.

When the type is no longer wanted, long slugs can, if necessary, be shortened for other jobs; the off-cuts go into the melting-pot, so that there is not the waste that results from the use of other material. The slug retains permanently its size and strength and the accurate alignment of its inner, or working, face.

The rapid production of these tie-up slugs is just one of the many ways in which a 'Monotype' Machine can bring you more profit from print.



*For further details, prices or demonstration, apply to*

**THE MONOTYPE CORPORATION LIMITED**

*Reg. Office:* Monotype House REGISTERED TRADE MARK

43 Fetter Lane, London, E.C.4 **MONOTYPE**

*HEAD OFFICE & WORKS:* SALFORDS, REDHILL, SURREY

